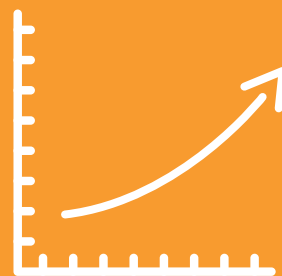


Parent support for statewide assessments grows when they understand how school leaders use the results

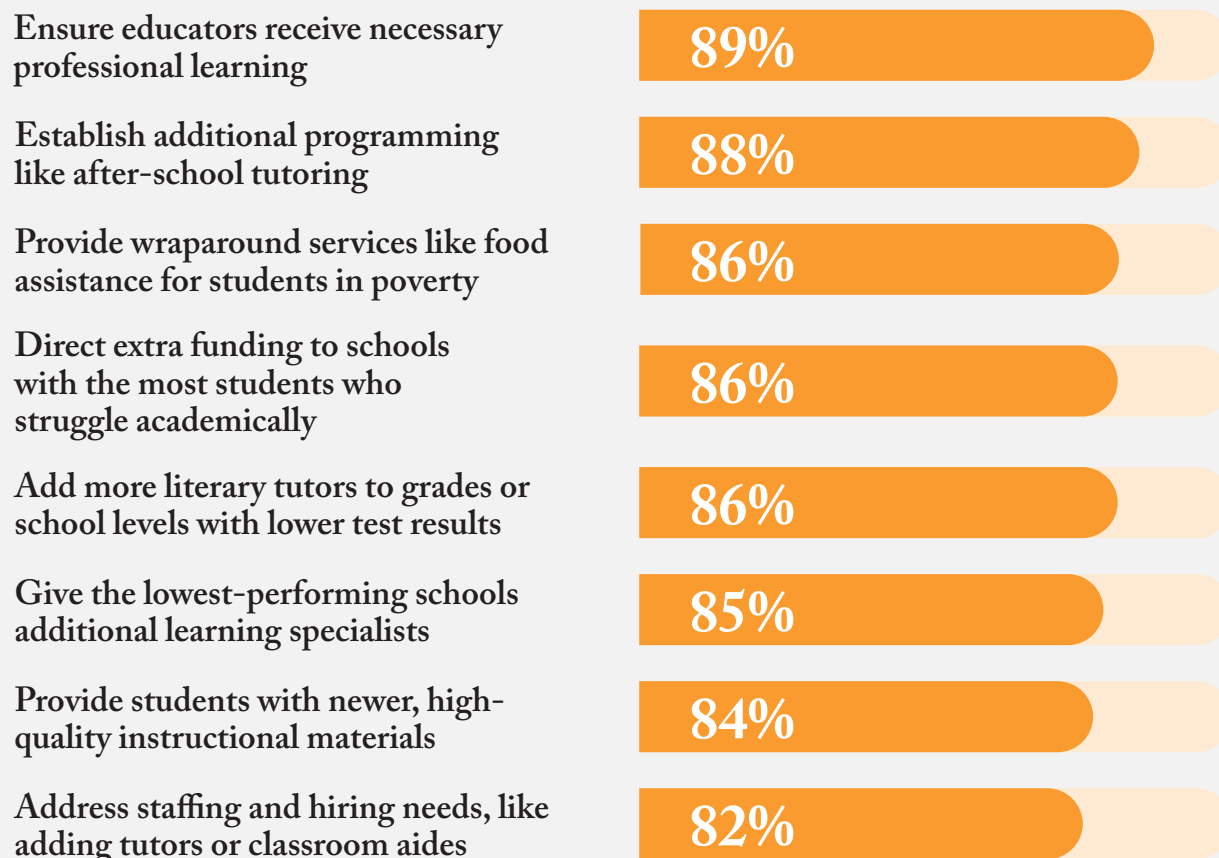


Parents know that schools use annual statewide assessments to measure student performance. But too few know how schools use them to improve student performance.

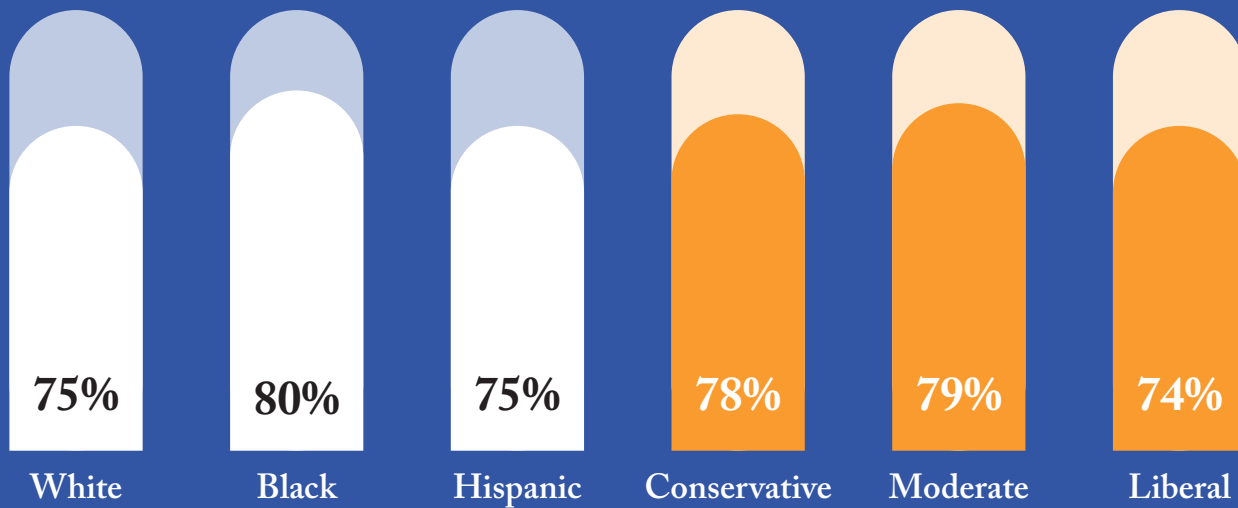
In-depth interviews with school district leaders showed that assessment results help guide important decisions. And a survey of parents revealed how important that context is to their support for assessments.

More than 8 in 10 parents agree that assessment data should drive actions that help students

Parents say state test data should be used to...



Parents value assessments to measure academic performance and progress

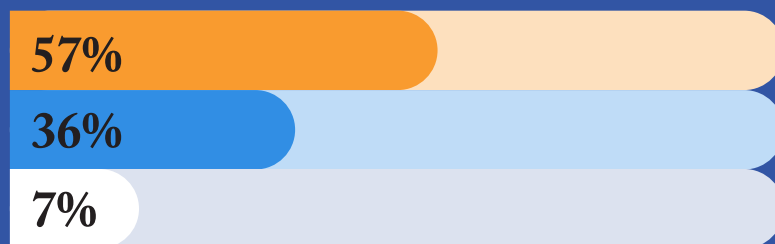


Parents value assessments MORE when they know the data is used to get resources to struggling students

More valuable

No change/Don't know

Less valuable



Learn more about what parents think of annual state assessments at assessmenthq.org/testing-1-2-3/

